

Features

- high rejection
- good VSWR, 1.1:1 typ. @ passband
- shielded case
- aqueous washable

Applications

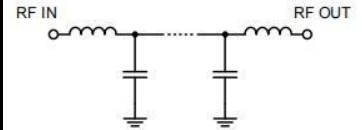
- CDMA
- cellular infrastructure
- wireless communications
- receivers / transmitters

HT-LPF-B0R8+

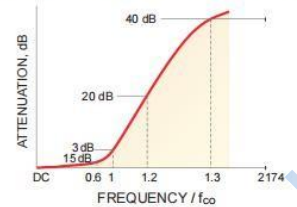


50Ω DC to 0.8 MHz

Functional Schematic



Typical Frequency Response



Bandpass Filter Electrical Specifications (T_{AMB}= 25°C)

PASSBAND (MHz) (Loss < 1.5dB)	f _{co} (MHz) Nom. (Loss < 3dB)	STOPBAND (MHz)		VSWR (:1)	
		(Loss > 20dB)	(Loss > 40dB)	Passband Typ.	Stopband Typ.
DC-0.8	1.25	1.55-1.75	1.75-1000	1.1	20

Typical Performance Data at 25°C

Frequency (MHz)	Insertion Loss (dB)		Return Loss (dB)	Frequency (MHz)	Group Delay (nsec)
	χ	σ			
0.03	0.16	0.02	32.59	0.03	616.97
0.30	0.24	0.01	19.55	0.04	603.62
0.63	0.29	0.02	31.18	0.05	598.63
0.80	0.52	0.02	21.42	0.06	590.63
1.10	1.04	0.03	18.29	0.08	567.48
1.20	1.74	0.22	26.89	0.10	572.98
1.25	3.19	0.55	9.57	0.15	569.80
1.30	6.62	0.83	3.92	0.20	575.21
1.35	11.38	0.95	1.86	0.25	576.60
1.45	21.66	0.96	0.87	0.30	581.55
1.55	31.62	1.00	0.63	0.35	592.62
1.75	52.28	1.65	0.48	0.40	604.02
4.00	63.88	0.53	0.28	0.50	625.22
10.00	79.78	1.22	0.28	0.55	651.29
100.00	92.14	4.30	0.16	0.60	666.34
500.00	71.51	1.78	0.29	0.63	680.95
800.00	66.00	1.68	0.42	0.70	711.58
1000.00	58.19	1.61	0.40	0.80	770.79

Maximum Ratings

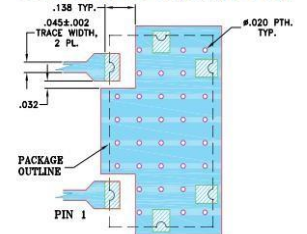
Operating Temperature	-40°C to 85°C
Storage Temperature	-55°C to 100°C
RF Power Input*	0.25W max.

Permanent damage may occur if any of these limits are exceeded.

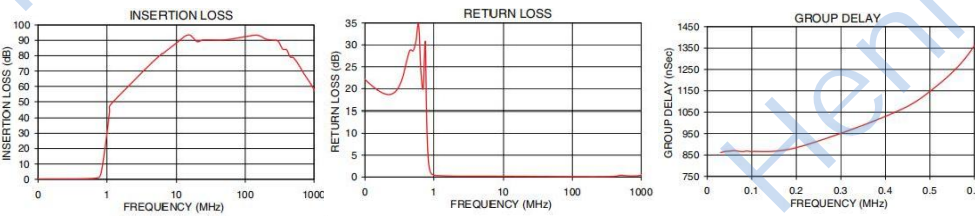
Pin Connections

INPUT	1
OUTPUT	2
GROUND	3,4,5,6

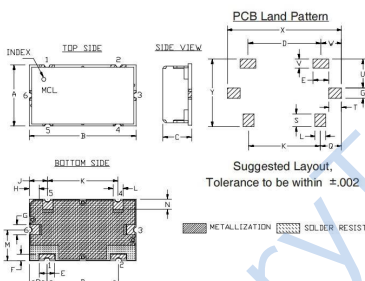
Demo Board MCL P/N: TB-400+ Suggested PCB Layout (PL-247)



- NOTES:
1. TRACE WIDTH IS SHOWN FOR FR4 WITH DIELECTRIC THICKNESS 0.025±0.002" COPPER: 1/2 OZ. EACH SIDE.
FOR OTHER MATERIALS TRACE WIDTH MAY NEED TO BE MODIFIED.
 2. BOTTOM SIDE OF THE PCB IS CONTINUOUS GROUND PLANE.
- DENOTES PCB COPPER LAYOUT WITH SMOBC (SOLDER MASK OVER BARE COPPER)
 ■ DENOTES COPPER LAND PATTERN FREE OF SOLDERMASK



Outline Drawing



Outline Dimensions: Unit (mm)

	A	B	C	D	E	F	G	H	J	K	L	M	N	P	Q	S	T	U	V	W	X	Y	WT
	11.99	20.98	5.59	14	3	1.19	1.98	1.92	3.61	13.79	1.98	5.99	2.01	3.51	4.11	2.49	2.44	5.51	1.70	3.99	22	13	